



STACKERS



SCISSOR CARTS



PALLET TRUCKS



MACHINERY GUARDS



SHELVING



**BRONZE BUNG NUT
WRENCHES & SOCKETS**

Hefti-Lifts & Stackers ❶	L2-L3
Pallet Trucks ❶	L3-L4
Scissor Carts ❶	L4-L7
Carousels ❷❶	L7-L8
Step Ladders & Stands ❷❶	L8-L9
Bollards & Guards ❶	L10-L11
Drums ❸	L12
Bung Nut Wrenches ❷❶	L12
Drum Dollies ❶	L13
Drum Lifters / Transporters ❶	L13-L14
Hydraulic Drum Dumper w/Stainless Steel Chute ❷❶	L15
Platform Trucks ❶	L16
Shelving ❶	L17
Bronze Tool Sets ❶	L17-L18
Bronze Bung Nut Wrenches & Sockets ❸❶	L18
Brass Drum Accessories ❶	L19
Ulma Products ❶	L20





model L-270-DC-HD-SS

Tote Lifters HAND PUMP OR 12V DC

Designed to lift open bottom skids, boxes, and baskets. Two operations available: hand pump and 12V DC power with rocker switch to raise or lower. Hand pump design features an ergonomic pump handle with two lifting speeds to accommodate for light or heavy loads. Side stabilizers lock lift in place when load is raised above 20½". DC power unit includes on-board battery charger. These stainless steel units feature nylon wheels. Units may not be suitable for wash down applications.

MODEL NUMBER	OPERATION	FORK SIZE (W x L)	SERVICE RANGE	UNIFORM CAPACITY	WEIGHT (POUND)
L-270-HD-SS®	HAND PUMP	27" x 45"	3½" to 31½"	3,000 lb.	306
L-270-DC-HD-SS®	12V DC	27" x 45"	3½" to 31½"	2,000 lb.	477
OPTIONS					
BCI	BATTERY CHARGE INDICATOR GAUGE				1

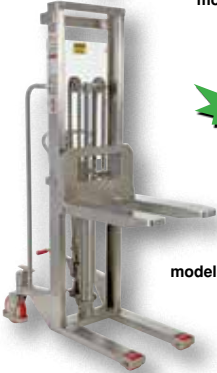


48 Hours
to Ship

model HYD-5-PSS

Hefti-Lifts

User-friendly portable stainless steel hydraulic lifts provide reliable, powerful lifting when moving and positioning loads. Includes removable platform for operations requiring forks. Manual hydraulic foot pump yields ¾" of platform travel per stroke. Non-slip chain is used for accurate positioning. Units roll easily on two rigid and two swivel poly-on-steel casters and include a foot operated brake. Not for use with pallets. Each fork is 4½"W x 2½"H, the fork length is the same as the platform length. Overall fork width is 22". Compact, lightweight stackers are capable of a smaller turning radius. Equipped with a built-in automatic load check valve for improved safety. Model HYD-5-SS features a hydraulic foot pump, while model HYD-10-DA-SS comes with a dual acting manual hydraulic hand pump.



New

model HYD-10-DA-SS

MODEL NUMBER	PLATFORM SIZE (W x L)	SERVICE RANGE	UNIFORM CAPACITY	OPERATION	WEIGHT (POUND)
PARTIALLY STAINLESS STEEL					
HYD-5-PSS	21" x 24"	6¼" to 45½"	450 lb.	FOOT PUMP	236
STAINLESS STEEL					
HYD-5-SS®	23⅞" x 21¼"	6¼" to 45½"	450 lb.	FOOT PUMP	230
HYD-10-DA-SS	25½" x 20⅞"	3⅞" x 59"	800 lb.	HAND PUMP	270



New

model HYD-10-DC-SS

DC Powered Hefti-Lift 12V DC STANDARD

This DC powered, medium duty, stainless steel semi-electric lift is user friendly providing reliable, powerful lifting when moving and positioning loads. Ideal for working in confined spaces and eliminates manual handling problems and injuries. Includes a stainless steel removable platform for operations requiring forks. Robust design - 304 grade all stainless steel construction. This stainless steel lift is non-corrosive and is good for washdown and corrosive acids applications. Ideal for food, pharmaceutical, chemical, and clean room applications. Unit rolls easily on two (2) rigid and two (2) total locking swivel casters. Each fork is 4"W x 2"H. The fork length is the same as the platform length. Overall fork width is 21⅞". Forks are adjustable to handle different size loads. Runs off one (1) 12V/60Ah battery. Includes an integral battery charger, battery charge indicator, and an emergency on/off switch. Not for use with pallets.

MODEL NUMBER	PLATFORM SIZE (W x L)	SERVICE RANGE	OVERALL SIZE (W x L x H)	UNIFORM CAPACITY	WEIGHT (POUND)
HYD-10-DC-SS	22" x 25¾"	3½" to 59"	24½" x 44" x 68"	880 lb.	257



New

model ULM-WMS-550

Manual Load Stacker

The Stainless Steel Manual Load Stacker is a great way to transport products in sanitary settings. The compact stainless steel design not only helps transport heavy loads around the work area, but also fits in a compact area for space saving when not in use. The unit is raised manually for a more precise height positioning, which diminishes bending and twisting when loading/unloading materials. Due to the cradle design, goods can be placed on the stacker from three sides without the need to change the placement of the stacker. Cradle adjusts in 1" increments up to 16" wide. Rolling casters are attached to provide a smooth transfer of products, while the braking system maintains safety once the unit is in place

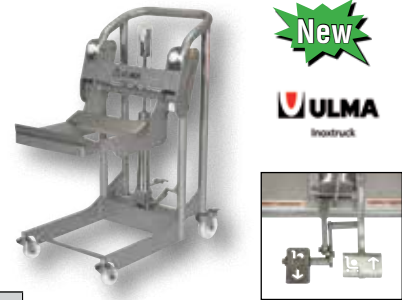
MODEL NUMBER	CRADLE SIZE (W x L)	MAXIMUM ROLL DIAMETER	SERVICE RANGE	UNIFORM CAPACITY	WEIGHT (POUND)
ULM-WMS-550	16" x 16"	24"	5½" to 62"	550 lb.	195



Hydraulic Foot Pump Roll Handler

A Stainless Steel Hydraulic Foot Pump Roll Handler is great for an assortment of areas including the food handling service industries. The design is sleek, smooth, and easily washable for before and after use in hygienic areas. The raising and lowering of the platform to the precise position is made easy by the hydraulic foot pump design, which diminishes needless bending when loading/unloading material. A rounded handle style allows for a proper two handed grip when maneuvering around work areas. The open cradle platform lets the user load material from three sides. Cradle adjusts in 1" increments up to 16" wide. The handler rolls smoothly on four (4) swivel casters with two (2) attached rear brakes for safe functionality when in a resting position.

MODEL NUMBER	CRADLE SIZE (W x L)	MAXIMUM ROLL DIAMETER	SERVICE RANGE	CAPACITY	WEIGHT (POUND)
ULM-HRH-850	16" x 16"	24"	5 ³ / ₈ " to 23"	850 lb.	106



model ULM-HRH-850

Electric Work Positioner **24V DC STANDARD**

The Stainless Steel Electric Work Positioner is a light weight and compact unit. Ideal for light industrial or commercial applications. Good maneuverability in narrow aisles and confined spaces. Robust design with 304 grade all stainless steel construction. Automatic electric overload protection system ensures safe operation. The stainless steel platform is easy to clean and retains an attractive appearance. Two (2) 3" swivel load casters and two (2) 5" total-locking swivel, polyurethane steering casters. Includes two (2) 12V AGM batteries with an integral battery charger.

MODEL NUMBER	PLATFORM SIZE (W x L)	SERVICE RANGE	OVERALL SIZE (W x L x H)	UNIFORM CAPACITY	WEIGHT (POUND)
MWP-330-DC-SS	18 ¹ / ₂ " x 24 ¹ / ₂ "	5" to 60"	24 ¹ / ₂ " x 34" x 71"	330 lb.	145



model MWP-330-DC-SS

Manual Work Positioner

The Stainless Steel Manual Work Positioner is a lightweight lift that is designed to take the strain out of any lifting job. Ideal for use in narrow aisles and confined spaces. The platform height is adjustable with a manual hand winch. An auto-brake system prevents uncontrolled lowering. Robust design - 304 grade all stainless steel construction. Rolls on two (2) 3" swivel load casters and two (2) 5" total-locking swivel, polyurethane steering casters.

MODEL NUMBER	PLATFORM SIZE (W x L)	SERVICE RANGE	OVERALL SIZE (W x L x H)	UNIFORM CAPACITY	WEIGHT (POUND)
MWP-440-SS	18 ¹ / ₂ " x 24 ¹ / ₂ "	5" to 60"	24 ¹ / ₂ " x 34" x 76"	440 lb.	130



model MWP-440-SS

Stacker with Powered Lift **12V DC STANDARD**

Stainless Steel Stacker with Powered Lift will raise and lower loads quickly and easily. Manual push stacker is constructed of high quality 304 stainless steel. Suitable for most food, medical, pharmaceutical industries and wash-down applications. Features one (1) 12V, 130-140Ah battery, on-board battery charger, and battery charge indicator. Unit maneuvers easily on two (2) swivel and four (4) nylon load rollers.

MODEL NUMBER	LOWERED HEIGHT	RAISED HEIGHT	*CAPACITY 0"-63" RH	*CAPACITY 63"-80" RH	WEIGHT (POUND)
STAINLESS STEEL FIXED FORKS OVER FIXED SUPPORT LEGS (works with skids only)					
SL-80-FF-SS	3 ³ / ₈ "	80"	2,500 lb.	2,000 lb.	1350
OPTIONS					
AGM-UPG-SL	AGM BATTERY UPGRADE (1) 12V 100Ah HOUR				65

*UNIFORM CAPACITY AT SPECIFIC RAISED HEIGHT



model SL-80-FF-SS

Pallet Trucks

The Stainless Steel Hydraulic Hand Pump Pallet Trucks are a superb addition to the food handling and other hygienic environments. The stainless steel construction is not only strong, but also simple to clean with its open fork design for thoroughly detailing the unit before/after transferring products. The height of the ergonomically friendly handle diminishes slouching and can be rotated for simple maneuvering of products down narrow corridors and pathways. All bearings are sealed for waterproof protection during both use and cleaning.

MODEL NUMBER	UNIFORM CAPACITY	OVERALL FORK SIZE (W x L)	SERVICE RANGE	WEIGHT (POUND)
ULM-PM-2745-30	3,300 lb.	26 ³ / ₄ " x 45 ¹ / ₄ "	3 ³ / ₈ " to 8"	170
ULM-PM-2745-40	4,500 lb.	26 ³ / ₄ " x 45 ¹ / ₄ "	3 ³ / ₈ " to 8"	170



model ULM-PM-2745-30



48 Hours
to Ship

model
PM5-2748-SS

Specialized Pallet Trucks (with nylon wheels) Ships with the Handle Detached Standard

Stainless Steel and Stainless Steel Frame & Forks: Ideal for sanitary, pharmaceutical, medical, food, corrosive, and wet environments. Choose type 304 stainless steel frame and forks only or 100% type 304 stainless steel pallet truck for long life in the most harsh environments. 5,500 lbs. uniform capacity.

Galvanized and Zinc Coated: Ideal for corrosive environments. Full-featured pallet trucks were designed for chemical, pharmaceutical, and wash-down applications. 5,500 pounds uniform capacity.

MODEL NUMBER	DESCRIPTION	OVERALL FORK DIMENSIONS	FORK SERVICE RANGE	WEIGHT (POUND)
PM5-2048-SS [Ⓢ]	STAINLESS STEEL	21½"W x 45"L	2 ⁷ / ₈ " to 7 ³ / ₄ "	232
PM5-2748-SS [Ⓢ]	STAINLESS STEEL	27"W x 48"L	2 ⁷ / ₈ " to 7 ³ / ₄ "	225
PM5-2748-SFF [Ⓢ]	SS FRAME & FORKS	27"W x 48"L	2 ⁷ / ₈ " to 7 ³ / ₄ "	194
PM5-2048-S-G	GALVANIZED	20" x 48"	2 ⁷ / ₈ " to 7 ³ / ₄ "	182
PM5-2748-S-G	GALVANIZED	27" x 48"	2 ⁷ / ₈ " to 7 ³ / ₄ "	197
PM5-2748-S-Z	ZINC COATED	27" x 48"	2 ⁷ / ₈ " to 7 ³ / ₄ "	211



48 Hours
to Ship

model
PM-2045-SCL-LP-SS

Pallet Trucks with Digital Scale

The Stainless Steel Pallet Trucks with Digital Scale allows you to weigh your load on the spot for maximum efficiency. This model is very user friendly and is suitable for low height lifting. The built-in scale allows you to weigh your load as you are handling it. The scale is selectable in a variety of increments to adjust to the size of your load. It has keyboard calibration and functional setup with automatic zero capabilities. Digital filtering is used to help compensate for vibration and motion to make the Stainless Steel Pallet Truck with Digital Scales smooth and accurate. Forks are 7" wide each. Factory calibrated for shipping destination. Scale is powered with 4 C batteries. AC adaptor included. NTEP approval also available. Units may not be suitable for wash down applications. Please contact factory.

MODEL NUMBER	UNIFORM CAPACITY	OVERALL FORK DIMENSIONS	FORK SERVICE RANGE	WEIGHT (POUND)
PM-2045-SCL-LP-SS [Ⓢ]	5,000 lb.	21 ⁷ / ₈ "W x 45 ¹¹ / ₁₆ "L	3 ³ / ₈ " to 8"	335
PM-2745-SCL-LP-SS [Ⓢ]	5,000 lb.	27½"W x 45¼"L	3" to 7½"	375



New

ULMA
Inostruck

model
ULM-EPT-2745-44

Electric Pallet Truck 24V DC STANDARD

The Stainless Steel Electric Pallet Truck is an ideal supplement to food service and other sterile settings. The stainless steel construction provides not only a strong structure for transferring heavy loads between work areas, but is also easily washable. An enclosed shelter for electronic components that is simple to access for general upkeep, while the humidity resistant electronics are great for working in difficult conditions. The adjustable height handle with built in horn helps maintain an ergonomic posture of the user during use. The emergency stop is perfectly located near the driving position of the unit for a rapid shut-down in the case of a crisis. During use the unit maneuvers efficiently on its waterproof roll wheels. Unit comes standard in 304 Stainless Steel (316 Stainless Steel is an option, contact factory for pricing). Battery is 24V/240Ah

MODEL NUMBER	UNIFORM CAPACITY	OVERALL FORK SIZE (W x L)	SERVICE RANGE	OVERALL SIZE (W x L x H)	WEIGHT (POUND)
ULM-EPT-2745-44	4,400 lb.	26½" x 44½"	3 ³ / ₈ " to 7 ⁵ / ₈ "	28" x 72" x 56"	1130



model
CART-660-M-PSS

Mechanical Scissor Cart (partially stainless steel)

Raise and lower material quickly and easily with our Mechanical Scissor Cart. Cart rolls smoothly on two (2) rigid and two (2) swivel casters. Mechanical screw drive provides precise positioning with no downward drift. The platform, frame, handle, caster rigs, and hardware are all stainless steel. Crank assembly and scissor legs are zinc plated. Wheels are poly-on-poly.

MODEL NUMBER	PLATFORM SIZE (W x L)	UNIFORM CAPACITY	LOWERED HEIGHT	RAISED HEIGHT	WEIGHT (POUND)
CART-660-M-PSS [Ⓢ]	23½" x 37"	660 lb.	17¼"	39¼"	148

Hydraulic Post Tables (partially stainless steel)

Foot-operated partially stainless steel Hydraulic Post Tables are built for heavy-duty shop use. They are good for many material handling uses including: lifting dies and castings, moving machine parts, positioning welders' work, leveling feed material for pump presses, conveyors and press brakes, and similar material handling jobs. Posts are telescoping to help stabilize and support loads during operation. Units include four casters; two (2) locking swivel with brakes and two (2) rigid. Light-duty units feature a single-speed foot pump. Heavy-duty units feature a two-speed foot pump for maximum operator convenience. All foot pumps include a down speed control valve for safe platform lowering. Partially stainless steel tables include a stainless steel platform, base frame, handle, caster rigs, and hardware. Pump assembly and leg posts are zinc plated. Poly-on-Poly casters standard.



MODEL NUMBER	PLATFORM SIZE (W x L)	UNIFORM CAPACITY	SERVICE RANGE	NUMBER OF POSTS	CASTER SIZE/TYPER*	OPERATION	WEIGHT (POUND)
HT-02-1616A-PSS [®]	16" x 16"	200 lb.	31" to 49"	1	4" x 1¼" PP	1-SPEED FOOT PUMP	126
HT-05-1818A-PSS [®]	18" x 18"	500 lb.	31" to 49"	2	4" x 1¼" PP	1-SPEED FOOT PUMP	151
HT-10-2036A-PSS [®]	20" x 36"	1,000 lb.	36" to 54"	2	4" x 1½" PP	2-SPEED FOOT PUMP	241
HT-20-2436A-PSS [®]	24" x 36"	2,000 lb.	36" to 54"	4	5" x 1½" PP	2-SPEED FOOT PUMP	332
HT-20-3036A-PSS [®]	30" x 36"	2,000 lb.	36" to 54"	4	5" x 1½" PP	2-SPEED FOOT PUMP	376

LOW PROFILE & SHORT PUMP LIFT RANGE AVAILABLE. CONSULT FACTORY. AC, DC, LINEAR ACTUATED, or AIR/OIL AVAILABLE. MODEL NUMBERS WITH THE SUFFIX "A" ARE SHIPPED KNOCK-DOWN

DC Powered and Manual Scissor Carts (partially stainless steel)

Tables provide unparalleled ergonomic support in lifting, palletizing, loading, and unloading applications. Carts are raised or lowered with either a 12V DC powered motor or a manual two-speed auto-shift foot pump. Units roll smoothly with two (2) rigid and two (2) swivel 4" x 2" phenolic casters with brakes. Push handle is removable. Internal DC powered electric motor and one (1) 12V battery is included on DC units. Electric motor is rated at 1600 watts. Built-in battery charger is included (operated on 115V AC power). Push buttons to raise and lower lift are located on the power unit. Hand control on coil cord standard. Platform is equipped with perimeter pinch-point guard for OSHA compliance. Partially stainless steel tables include a stainless steel platform, base frame, and hydraulic cylinder. Scissor legs are galvanized while the handle is chrome plated.



MODEL NUMBER	PLATFORM SIZE (W x L)	SERVICE RANGE	UNIFORM CAPACITY	LIFT SPEED OR # OF PUMPS	WEIGHT (POUND)
12V DC POWER					
CART-23-10-DC-PSS	24" x 36"	11¼" to 32"	1,000 lb.	14 sec.	578
CART-23-15-DC-PSS	24" x 36"	11¼" to 32"	1,500 lb.	16 sec.	583
TWO-SPEED FOOT PUMP					
CART-23-10-M-PSS	24" x 36"	11¼" to 32"	1,000 lb.	54 low - 27 high	424
CART-23-15-M-PSS	24" x 36"	11¼" to 32"	1,500 lb.	54 low - 27 high	427



Scissor Carts

Our fully welded Model SSSC carts resist corrosion in wet environments. All parts are made from 304 grade stainless steel, including the hydraulic pump and foot pedal. These carts are suitable for most food, medical, and pharmaceutical industry settings. Also suitable for wash-down applications. Two (2) rigid and two (2) swivel polyurethane wheels with brakes standard. Units feature a high quality actuated, single-speed hydraulic pump.

Models CART-550-SS & CART-1100-SS, two-speed hydraulic pump.



MODEL NUMBER	PLATFORM SIZE (W x L)	SERVICE RANGE	UNIFORM CAPACITY	WEIGHT (POUND)
SSSC-200 [®]	17¾" x 27½"	10" to 30½"	200 lb.	135
SSSC-400 [®]	19½" x 32¾"	12¾" to 36½"	400 lb.	209
SSSC-1000 [®]	20½" x 40"	17" to 40"	1,000 lb.	313
CART-550-SS*	19½" x 31½"	9¾" to 33½"	550 lb.	179
CART-600-D-SS*	23⅝" x 35½"	13⅜" to 56¼"	600 lb.	340
CART-800-D-SS*	23⅝" x 35½"	13⅜" to 48⅞"	800 lb.	335
CART-1100-SS* [®]	23½" x 35½"	13" to 38½"	1,100 lb.	249

*FOOT PUMP PEDAL, PUMP ASSEMBLY, AND HYDRAULIC CYLINDER ARE CHROME PLATED. REST OF THE UNIT IS FULLY STAINLESS STEEL.



model
CART-200-D-PSS



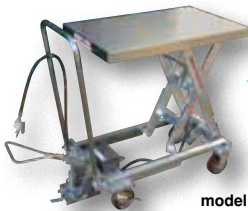
model
CART-1000-PSS



model
CART-500-SCL-PSS



model
CART-500-LA-PSS



model
AIR-1000-PSS



model
AIR-1500-D-PSS

Hydraulic Elevating Carts (partially stainless steel)

Portable work positioning lift table is constructed of durable stainless steel to lift, position and transport heavy loads in corrosive environments, such as in lab, food service and healthcare applications. Durable stainless steel platform and frame with zinc plated scissor legs and pump assembly offers maximum rust-resistance. Foot-operated hydraulic pump raises platform. To lower unit use the hand-operated release. Cart rolls smoothly with poly-on-poly casters.

MODEL NUMBER	PLATFORM SIZE (W x L)	UNIFORM CAPACITY	SERVICE RANGE	FOOT PUMP SPEED	WEIGHT (POUND)
CART-200-D-PSS [Ⓢ]	17½" x 27½"	220 lb.	10" to 51"	SINGLE	158
CART-400-PSS [Ⓢ]	17½" x 27½"	400 lb.	8¾" to 29"	SINGLE	135
CART-750-PSS [Ⓢ]	19¾" x 32½"	750 lb.	15½" to 35½"	SINGLE	202
CART-800-D-PSS [Ⓢ]	20" x 35½"	800 lb.	15½" to 50¾"	SINGLE	275
CART-1000-PSS [Ⓢ]	19¾" x 32½"	1,000 lb.	15½" to 35½"	SINGLE	222
CART-1000-LD-PSS* [Ⓢ]	31½" x 63"	1,000 lb.	15" to 36"	SINGLE	314
CART-1500-D-TS-PSS* [Ⓢ]	24" x 47½"	1,500 lb.	19" to 68"	TWO	540
CART-1750-PSS* [Ⓢ]	20" x 39½"	1,750 lb.	17" to 40"	SINGLE	288
CART-2000-PSS* [Ⓢ]	24" x 47"	2,000 lb.	15" to 39"	TWO	395

*PLATFORM, HANDLE, BASE FRAME, CASTER RIG, & HARDWARE ARE ALL STAINLESS STEEL. PUMP ASSEMBLY, SCISSOR LEGS, AND FOOT PEDAL ARE ZINC PLATED.

Scissor Cart with Built-In Scale (partially stainless steel)

Ideal for parts counting, inventory rooms, or shipping weights at the loading dock. Provides an ergonomic workstation while sitting or standing. Portable elevating platform includes an integral scale that provides an ergonomic weigh-station while sitting or standing. Digital scale readout features a Tare feature, displays weight in 1 lb. intervals, and is powered with over the counter batteries or AC adapter. Foot operated pump raises platform and a hand-operated knob lowers platform. Cart rolls smoothly on (2) rigid and two (2) swivel with brakes poly-on-poly casters.

MODEL NUMBER	PLATFORM SIZE (W x L)	UNIFORM CAPACITY	LOWERED HEIGHT	RAISED HEIGHT	WEIGHT (POUND)
CART-500-SCL-PSS [Ⓢ]	19½" x 32"	500 lb.	14"	38"	282

PLATFORM HANDLE, BASE FRAME CASTER RIG & HARDWARE ARE STAINLESS STEEL. PUMP ASSEMBLY, SCISSOR LEGS, AND FOOT PEDAL ARE ZINC PLATED

Linear Actuated Elevating Cart (partially stainless steel) 12V DC STANDARD

Transport materials from workstation to workstation with ease. Platform is raised and lowered with an electric linear actuator for precise positioning. Linear actuator will not allow platform to drift down - a common problem with hydraulic carts. This linear actuated cart is powered with a 12V DC battery and features an on-board charger. Emergency stop button standard on hand control. Includes two rigid and two swivel casters. Platform, handle, base frame, caster brackets and hardware are all stainless steel. Air pump, hydraulic cylinder, scissor legs and foot pedal are zinc plated. Battery pack, charger, and hand control are plastic. Linear actuator is plastic with a chrome-plated piston. Wheels are poly-on-poly.

MODEL NUMBER	PLATFORM SIZE (W x L)	UNIFORM CAPACITY	LOWERED HEIGHT	RAISED HEIGHT	WEIGHT (POUND)
CART-500-LA-PSS [Ⓢ]	19½" x 32"	500 lb.	14"	35"	245

Air Hydraulic Carts (partially stainless steel)

Features two speed foot pump and hand held reciprocating air/oil power to raise the platform. Utilize the two speed foot pump for minor height adjustments and the factory air/oil power for effortless lifting of up to 2,000 uniform pounds. The platform, handle, base frame, caster brackets, and hardware are all stainless steel. Air pump, hydraulic cylinder, scissor legs, and foot pedal are zinc plated. Wheels are poly-on-poly.

MODEL NUMBER	PLATFORM SIZE (W x L)	UNIFORM CAPACITY	SERVICE RANGE	CASTER SIZE	WEIGHT (POUND)
AIR-800-D-PSS	20" x 35½"	800 lb.	13¾" to 51"	5" x 1½"	317
AIR-1000-PSS	19¾" x 32½"	1,000 lb.	15¾" to 35½"	5" x 1½"	340
AIR-1000-LD-PSS	31½" x 63"	1,000 lb.	12⅛" to 35½"	5" x 1½"	340
AIR-1500-D-PSS	24" x 47¼"	1,500 lb.	19½" x 67"	6" x 2"	586
AIR-1750-PSS	20" x 39½"	1,750 lb.	14¼" to 39½"	6" x 2"	312
AIR-2000-PSS	24" x 47¼"	2,000 lb.	15" to 39½"	6" x 2"	441

Lift & Tilt Cart with Sequence Select (partially stainless steel)

Lift & Tilt Cart with Sequence Select has a unique design which allows the user to RAISE and TILT materials to an ergonomic position for better posture and operator comfort. The manual hydraulic foot pump controls the platform lift, lower, and tilt. A manual selector valve is used to control the lift/lower sequence independently from the tilt sequence. The platform includes a 7" high retaining lip. Rolls on two (2) rigid and two (2) swivel 5" poly casters.

MODEL NUMBER	PLATFORM SIZE (W x L)	UNIFORM CAPACITY	MAX. TILT	SERVICE RANGE**	WEIGHT (POUND)
CART-1000-LT-PSS*	22" x 33 ⁵ / ₈ "	1,000 lb.	40°	17 ¹ / ₂ " to 35"	323

**SERVICE RANGE FIGURED WITH PLATFORM LEVEL

*PLATFORM, HANDLE, CASTER BRACKETS, & HARDWARE ARE ALL STAINLESS STEEL. PUMP ASSEMBLY, SCISSOR LEGS, AND FOOT PEDAL ARE ZINC PLATED.



model
CART-1000-LT-PSS

Spring Scissor Tables (partially stainless steel)

The Spring Scissor Tables are ideal for distributing and shipping facilities. These units allow the user to transfer products from work space to work space, while holding an ergonomically friendly position. The frame is designed of steel construction, which allows for strength and durability. The scissor mechanism raises the unit to the desired height, while the internal spring provides support when unit is being loaded and unloaded. The round top can be manually rotated 360 degrees for improved packaging and handling capabilities. Fork pockets measure 6³/₄"W x 1¹/₂"H. Constructed of partially stainless steel base, frame, springs, and legs.

Model SST-45-PSS-ST has a solid top.

MODEL NUMBER	PLATFORM DIAMETER	UNIFORM CAPACITY	SERVICE RANGE	BASE SIZE (W x L)	WEIGHT (POUND)
SST-45-PSS	43 ⁵ / ₈ "	400 to 4,500 lb.	9" to 27 ³ / ₄ "	36" x 36 ³ / ₄ "	432
SST-45-PSS-ST	43 ⁵ / ₈ "	400 to 4,500 lb.	9" to 27 ³ / ₄ "	36" x 36 ³ / ₄ "	452



model
SST-45-PSS-ST



model
SST-45-PSS

Air Corner Tilter **FACTORY AIR POWERED**

The Stainless Steel Air Corner Tilter provides ergonomic loading and unloading of bulk containers, gaylords, or crates. Pallet truck and fork truck accessible. Tilts up to 45°. Activated by a hand operated control lever or foot pedal. By adjusting the air regulator to a predetermined pressure, the air bag inflates tilting the container automatically as it is unloaded. As the container becomes lighter, it automatically tilts and the material shifts to the corner of the container where it can be easily removed by manual or mechanical means. The adjustable regulator is factory preset to begin rotating the container when the weight reaches approximately 900 pounds. Pressure is easily adjustable for the weight of your application.

MODEL NUMBER	DESCRIPTION	PLATFORM SIZE (W x L)	UNIFORM CAPACITY	WEIGHT (POUND)
AIR-THL-SS	HAND LEVER OPERATION	44" x 44"	1,500 lb.	550



model AIR-THL-SS

Thin Spins - pallet truck loadable carousel

Stainless Steel Thin Spin are pallet truck loadable carousels. When confronted with minimum floor space and only a hand pallet truck, the Thin Spin low-profile carousel is ideal for loading and unloading pallet applications. The unit is pallet truck loadable because of its sleek overall height. The detent lock restricts carousel rotation when not in use. The Carousel requires a starting force of approximately thirty-five (35) pounds and a maintaining force of twenty-five (25) pounds. Stainless Steel Thin Spins are constructed of type 304 stainless steel mill finish. Units may not be suitable for wash down applications. Please contact factory.

MODEL NUMBER	USABLE DIAMETER	OVERALL DIAMETER	HEIGHT	UNIFORM CAPACITY	WEIGHT (POUND)
LP-4000T-SS	51"	59 ¹¹ / ₁₆ "	7 ⁷ / ₈ "	4,000 lb.	247
LP-4000T-45-SS	45"	53 ¹¹ / ₁₆ "	7 ⁷ / ₈ "	4,000 lb.	245
LP-4000T-39-SS	39"	47 ¹¹ / ₁₆ "	7 ⁷ / ₈ "	4,000 lb.	219



model LP-4000T-SS



model
CA-40-4-SS

Manual Carousels

Stainless Steel Manual Carousels rotate materials with the assistance of an operator. Now loading and unloading operations can be done more efficiently; minimizing fatigue and risk of back injury. The carousel may be added to an existing work bench, scissor table, or simply placed on the floor. A series of sealed ball bearings transfer the load smoothly and evenly to the supporting surface. Guide rollers keep the rings aligned.

MODEL NUMBER	OUTER DIAMETER	UNIFORM CAPACITY	OVERALL HEIGHT	WEIGHT (POUND)
CA-40-2-SS	40"	2,000 lb.	2"	47
CA-40-4-SS	40"	4,000 lb.	2"	47
CA-40-6-SS	40"	6,000 lb.	2"	49



model
SCALE-LT-44-5K

Wash Down Floor Scales

Ideal for food, chemical, and pharmaceutical applications, these scales can withstand daily washdown. Non-metallic deck insert, type 304 stainless steel frame, feet, and bolts standard. Comes with stainless steel NTEP load cells and junction box. Easiest "clean-in-place" scale on the market. Just lift out the 1" thick polyethylene deck insert, leaving the stainless steel scale frame in place and hose down! Accuracy to NIST H44. The digital display stands 42" high and is powered by 115V AC, cord included. Bases are constructed in the USA with domestic steel.

MODEL NUMBER	UNIFORM CAPACITY	PLATFORM SIZE (W x L x H)	WEIGHT (POUND)
SCALE-LT-44-5K	5,000 lb.	48" x 48" x 4"	296
SCALE-LT-55-5K	5,000 lb.	60" x 60" x 4"	336
SCALE-LT-44-10K	10,000 lb.	48" x 48" x 4"	351
SCALE-LT-55-10K	10,000 lb.	60" x 60" x 4"	391



model
SCALE-STS-44-5K

Floor Scales

All purpose Stainless Steel Floor Scales are designed to withstand the widest variety of demanding industrial applications, including pharmaceutical, heavy washdown, food processing, chemical, and hazardous areas. Heavy duty Type 304 structural steel construction with stainless steel summing enclosure, hardware, and feet. Uses four hermetically sealed, stainless steel NTEP load cells. The digital display stands 42" high and is powered by 115V AC, cord included. Smooth top standard, treadplate available. Contact factory.

MODEL NUMBER	UNIFORM CAPACITY	PLATFORM SIZE (W x L x H)	WEIGHT (POUND)
SCALE-STS-44-5K	5,000 lb.	48" x 48" x 3½"	384
SCALE-STS-55-5K	5,000 lb.	60" x 60" x 3½"	419
SCALE-STS-44-10K	10,000 lb.	48" x 48" x 3½"	439
SCALE-STS-55-10K	10,000 lb.	60" x 60" x 3½"	474



Winches

Constructed of 304 stainless steel for superior corrosion resistance. Machine-cut spur gears ensure smooth accurate operation, while protective gear covers keep dirt out and help prevent worker injuries. Winches feature a drum clamp for easy attachment of wire rope (not included) and an automatic brake for positive load control during lifting and lowering operations.

MODEL NUMBER	DESCRIPTION	CAPACITY	WEIGHT (POUND)
HWSS-1200-NR	304 STAINLESS STEEL	1,200 lb.	9
HWSS-1800-NR	304 STAINLESS STEEL	1,800 lb.	18
HWSS-2600-NR	304 STAINLESS STEEL	2,600 lb.	24



model
HWSS-1200-NR

model
HWSS-1800-NR

model
HWSS-2600-NR

Folding Ladders with Wheels

Locking folding design saves on storage space when ladder is not in use. Ladder folds after unlocking one spring-loaded detent pin. Once unit is folded, tilt back on wheels for easy portability. The steps are perforated to provide a non-slip surface. The ladders have 7" deep steps and a climb angle of 58°. Stainless steel construction. Complies with ANSI 14.7 and OSHA 1910.29 specifications.

MODEL NUMBER	NUMBER OF STEPS	TOP STEP HEIGHT	UNIFORM CAPACITY	WEIGHT (POUND)
FLAD-2-SS	2	20"	350 lb.	31
FLAD-3-SS	3	30"	350 lb.	39
FLAD-4-SS	4	40"	350 lb.	47



model FLAD-3-SS

Step Stands

The Stainless Steel Step Stands are for the school, home, or industrial facilities. The stainless steel construction is durable and long lasting in the harshest of conditions. Both models contain a slip resistant tread for stability. Model FT-SS-1HR includes a handrail for better personal steadiness when reaching for high objects.

MODEL NUMBER	DESCRIPTION	OVERALL SIZE (W x D x H)	WEIGHT (POUND)
FT-SS-1	STEP STAND	15" x 11¼" x 11"	16
FT-SS-1HR	STEP STAND W/ HANDRAIL	16¼" x 11¼" x 37"	18
FT-SS-1-HDL	HANDLE ONLY		2



model FT-SS-1



model FT-SS-1HR



Adjustable Step-Mate Stands

Our Adjustable Step-Mate Stands can be used as either a comfortable worker platform or a semi-permanent step. Individual step size is 12" deep. Serrated surface ensures safe footing. Legs adjust individually by screwing them into or out of the leg base. Welded stainless steel construction. Uniform capacity 500 pounds. Model ASP-PORT only fits on two (2) step models; 24", 36", and 48" wide.

MODEL NUMBER	OVERALL (W x D)	NUMBER OF STEPS	LOWER STEP HEIGHT	MIDDLE STEP HEIGHT	UPPER STEP HEIGHT	WEIGHT (POUND)
ASP-24-SS	24" x 24"	2	6" to 8¼"	13" to 15¼"	--	38
ASP-36-SS	36" x 24"	2	6" to 8¼"	13" to 15¼"	--	58
ASP-48-SS	48" x 24"	2	6" to 8¼"	13" to 15¼"	--	82
ASP-60-SS	60" x 24"	2	6" to 8¼"	13" to 15¼"	--	112
ASP-72-SS	72" x 24"	2	6" to 8¼"	13" to 15¼"	--	124
ASP-24-3-SS	24" x 36"	3	6" to 7½"	13" to 14½"	20" to 21½"	61
ASP-36-3-SS	36" x 36"	3	6" to 7½"	13" to 14½"	20" to 21½"	65
ASP-48-3-SS	48" x 36"	3	6" to 7½"	13" to 14½"	20" to 21½"	113
PORTABILITY OPTIONS						
ASP-PORT	BOLT-ON PORTABILITY KIT ((2) STEP; 24", 36", & 48" WIDE UNITS)					12



model ASP-24-3-SS

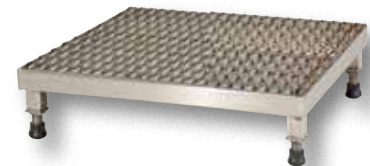
Adjustable Work-Mate Stands

Minimizes fatigue by elevating workers to heights that are comfortable and ergonomically correct. Especially useful when multiple shift employees operate the same piece of machinery. Serrated surface ensures safe footing in most wet environments. Ergonomic matting surface provides comfort for the operator who stands all day. The height of each leg can be adjusted individually to ensure proper working height. All sizes have four legs except the 60", 72" and 96" long models, which have six legs. Uniform capacity is 500 pounds each. Welded stainless steel construction.



model AHW-L-2460-SS

DECK SIZE (W x L)	SERVICE RANGE	MODEL NUMBER	WEIGHT (POUND)	MODEL NUMBER	WEIGHT (POUND)
		SERRATED SURFACE		ERGONOMIC MATTING SURFACE	
19" x 24"	6½" to 9"	AHW-L-1924-SS	30	AHT-L-1924-SS	41
24" x 24"	6½" to 9"	AHW-L-2424-SS	39	AHT-L-2424-SS	36
19" x 36"	6½" to 9"	AHW-L-1936-SS	45	AHT-L-1936-SS	41
24" x 36"	6½" to 9"	AHW-L-2436-SS	50	AHT-L-2436-SS	48
19" x 48"	6½" to 9"	AHW-L-1948-SS	53	AHT-L-1948-SS	51
24" x 48"	6½" to 9"	AHW-L-2448-SS	59	AHT-L-2448-SS	57
24" x 60"	6½" to 9"	AHW-L-2460-SS	65	AHT-L-2460-SS	112
24" x 72"	6½" to 9"	AHW-L-2472-SS	115	AHT-L-2472-SS	132
24" x 96"	6½" to 9"	AHW-L-2496-SS	124	AHT-L-2496-SS	158
19" x 24"	10¾" to 17"	AHW-H-1924-SS	37	AHT-H-1924-SS	37
24" x 24"	10¾" to 17"	AHW-H-2424-SS	40	AHT-H-2424-SS	40
19" x 36"	10¾" to 17"	AHW-H-1936-SS	47	AHT-H-1936-SS	57
24" x 36"	10¾" to 17"	AHW-H-2436-SS	57	AHT-H-2436-SS	63
19" x 48"	10¾" to 17"	AHW-H-1948-SS	58	AHT-H-1948-SS	55
24" x 48"	10¾" to 17"	AHW-H-2448-SS	65	AHT-H-2448-SS	68
24" x 60"	10¾" to 17"	AHW-H-2460-SS	111	AHT-H-2460-SS	130
24" x 72"	10¾" to 17"	AHW-H-2472-SS	135	AHT-H-2472-SS	132
24" x 96"	10¾" to 17"	AHW-H-2496-SS	136	AHT-H-2496-SS	175



model AHW-L-1924-SS



model
PARK-P-108-FD-SS

Fold Down Bollard

Ideal for vehicle access control, these heavy duty bollards feature integrated locking and an easy operate cam-lock. Unit secures in both open and closed position via internal lock. Two (2) keys included. Units need to be bolted down to concrete base to secure correctly.

Two (2) wrap around reflectors adhere to the stainless steel finish. The anti-tamper design and cast steel covering foot is made in a mold, therefore there are no welds. Can be used in conjunction with our Fixed Height Bollards shown on page H16.

MODEL NUMBER	DESCRIPTION	RAISED HEIGHT	COLLAPSED HEIGHT	BOLLARD DIAMETER	WEIGHT (POUND)
PARK-P-108-FD-SS	STAINLESS STEEL	33½"	5"	4¼"	20
AS-383	ANCHOR BOLTS FOR CONCRETE (1) 3/8" x 3"				1
AS-383-4PK	ANCHOR BOLTS FOR CONCRETE (4) 3/8" x 3"				4



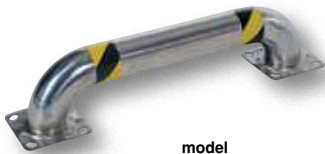
model
BOL-SS-42-4.5

48 Hours
to Ship

Stainless Steel Pipe Safety Bollards

Bollards can be used both indoors and outdoors to protect work areas, racking, and personnel. Stainless steel caps are welded on. Base plate measures 8" x 8" and includes four (4) pre-drilled mounting holes. Mounting kits available. 304 stainless steel polished finish.

MODEL NUMBER	FINISH	HEIGHT	OUTSIDE DIAMETER	WEIGHT (POUND)
BOL-SS-36-4.5	304 STAINLESS STEEL	36"	4½"	25
BOL-SS-42-4.5	304 STAINLESS STEEL	42"	4½"	28
AS-344	ANCHOR BOLTS FOR CONCRETE (1) 3/4" x 4¼"			1
AS-344-4PK	ANCHOR BOLTS FOR CONCRETE (4) 3/4" x 4¼"			4



model
LPRO-SS-36-9-4

48 Hours
to Ship

Low Profile Rack Guards

May be used either indoors or outdoors to protect valuable pallet racking, machinery, and personnel. Available with a yellow powder coat or 304 stainless steel polished finish. Two base plates with four (4) pre-drilled mounting holes in each plate. Welded stainless steel construction.

MODEL NUMBER	FINISH	HEIGHT	LENGTH	OUTSIDE DIAMETER	WEIGHT (POUND)
LPRO-SS-36-9-4	304 STAINLESS STEEL	9"	36"	4½"	40
LPRO-SS-48-9-4	304 STAINLESS STEEL	9"	48"	4½"	65
LPRO-SS-36-16-4	304 STAINLESS STEEL	16"	36"	4½"	41
LPRO-SS-48-16-4	304 STAINLESS STEEL	16"	48"	4½"	90
AS-344	ANCHOR BOLTS FOR CONCRETE (1) 3/4" x 4¼"			1	
AS-344-4PK	ANCHOR BOLTS FOR CONCRETE (4) 3/4" x 4¼"			4	



model
HPRO-SS-48-42-4

48 Hours
to Ship

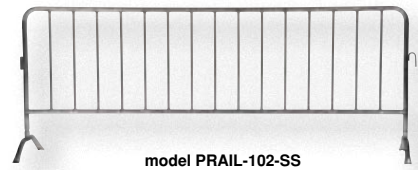
High Profile Machinery Guards

Heavy-duty welded steel construction for protecting racks, building walls, expensive equipment, and hundreds of other applications. All 42" high units include a 21" mid-rail to comply with OSHA requirements. 304 stainless steel polished finish. Two base plates with four (4) pre-drilled mounting holes in each plate.

MODEL NUMBER	FINISH	HEIGHT	LENGTH	OUTSIDE DIAMETER	WEIGHT (POUND)
HPRO-SS-36-36-4	304 STAINLESS STEEL	36"	36"	4½"	94
HPRO-SS-48-36-4	304 STAINLESS STEEL	36"	48"	4½"	102
HPRO-SS-36-42-4	304 STAINLESS STEEL	42"	36"	4½"	100
HPRO-SS-48-42-4	304 STAINLESS STEEL	42"	48"	4½"	107
AS-344	ANCHOR BOLTS FOR CONCRETE (1) 3/4" x 4¼"			1	
AS-344-4PK	ANCHOR BOLTS FOR CONCRETE (4) 3/4" x 4¼"			4	

Crowd Control Interlocking Barriers

Attractive and functional design ideal for directing personnel. Interlocking portable railing has many commercial and industrial applications. Easy to move to meet changing needs. Upright bars are vertically spaced at 5 7/8" intervals for the light-weight style barriers and 5 3/4" for the heavy-duty style. Each railing includes connectors to attach multiple units together to form long runs. Overall size is 102"L x 40"H. Feet are removable so railing will lay flat for shipping and storage. Rugged welded 304 stainless steel construction.



model PRAIL-102-SS

MODEL NUMBER	STYLE	RAIL DIAMETER	FOOT STYLE	WEIGHT (POUND)
PRAIL-102-SS	LIGHT-WEIGHT	1 1/4"	BOTH CURVED	62
PRAIL-102-HD-SS	HEAVY-DUTY	1 5/8"	BOTH CURVED	72

Corner Guards

Provides for quick and easy corner protection. Excellent corrosion resistance. Made from 1/16" thick type 304 stainless steel. Mounting hardware/adhesive is NOT included.

MODEL NUMBER	STYLE ANGLE	FLANGE WIDTH	OVERALL HEIGHT	WEIGHT (POUND)
SS-48	SQUARE	3 1/2" x 3 1/2"	48"	7
SS-48R	ROUNDED	3 1/2" x 3 1/2"	48"	6



model SS-48



model SS-48R

Winch Operated Truck Jib Cranes

Installed in your pick-up truck bed, this winch operated jib crane will help lift loads. Lift items from ground to truck bed height, then rotate into cargo area. Includes telescopic boom design with manual hydraulic hand pump to pivot boom up and down. Manual cable winch to lift and lower loads. Friction brake winch locks automatically when operator turns the handle counterclockwise to lower load. Unit comes with one (1) fixed hook, one (1) chain slot lock, and one (1) cable sling hook with latch. The crane swivels on a 360° base. 12V DC power option available.

MODEL NUMBER	OPERATION	BOOM	FIXED HOOK CAPACITY	BOOM REACH	LIFT RANGE	WEIGHT (POUND)
WTJ-2-SS	HAND	EXTENDED	500 lb.	54"	0 TO 102"	134
	PUMP	RETRACTED	1,000 lb.	30 1/4"	10" TO 89 1/2"	
WTJ-4-SS	HAND	EXTENDED	1,000 lb.	44"	0 TO 86 1/2"	218
	PUMP	RETRACTED	2,000 lb.	30"	13 1/2" TO 77 1/2"	



New

model WTJ-2-SS

Lockers

Our 304 Stainless Steel Lockers are the perfect solution for areas prone to rust and sanitation concerns and are ideal for food industry, pool area, and outdoor applications. Ships knocked down, some assembly required. Other styles available, contact factory.

MODEL NUMBER	NUMBER OF COLUMNS	NUMBER OF ROWS	NUMBER OF LOCKERS	OVERALL SIZE (W x D x H)	WEIGHT (POUND)
LOCK-1218-SSS1	1	1	1	12" x 18" x 78"	62
LOCK-1818-SSS1	1	1	1	18" x 18" x 78"	79
LOCK-3618-SSS3	3	1	3	36" x 18" x 78"	168
LOCK-5418-SSS3	3	1	3	54" x 18" x 78"	219
LOCK-1218-SSD1	1	2	2	12" x 18" x 78"	64
LOCK-1818-SSD1	1	2	2	18" x 18" x 78"	79
LOCK-3618-SSD3	3	2	6	36" x 18" x 78"	174
LOCK-5418-SSD3	3	2	6	54" x 18" x 78"	219
LOCK-5418-SS31	1	3	3	54" x 18" x 78"	270
LOCK-1218-SS61	1	6	6	12" x 18" x 78"	74
LOCK-1818-SS61	1	6	6	18" x 18" x 78"	96
LOCK-3618-SS63	3	6	18	36" x 18" x 78"	216
LOCK-5418-SS63	3	6	18	54" x 18" x 78"	270
LOCK-CR-12	12" COAT ROD (available in 1 & 2 tiers only)				1
LOCK-CR-18	18" COAT ROD (available in 1 & 2 tiers only)				2



model LOCK-3618-SS63



model LOCK-3618-SSD3

New



New

model CYL-D-FDT-SS

model CYL-S-FDT-SS

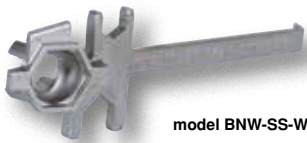
Cylinder Hand Trucks

Fold-down single and double cylinder stainless steel hand trucks are designed and built to transport gas cylinders with ease. Tilt back design for effortless transportation. Fold-down hand trucks are designed to carry cylinder loads on 4-wheel base, thus minimizing operator fatigue and risk. Gas cylinder hand trucks hold cylinders up to 12" in diameter. Chains and contoured back cradle provide utmost safety. Fold-down trucks are designed for quick, easy, and safe movement of most types of gas cylinders. Units roll on two (2) 8" x 1½" and two (2) 3" x 1½" poly-on-poly wheels with brakes.

MODEL NUMBER	CYLINDER QUANTITY	CAPACITY (POUNDS)	CYLINDER DIAMETER	OVERALL SIZE (W x L x H)	WEIGHT (POUND)
CYL-S-FDT-SS	SINGLE	250 lb.	5½" to 117/8"	39¾" x 17" x 357/8"	33
CYL-D-FDT-SS	DOUBLE	440 lb.	5½" to 117/8"	39¾" x 28¾" x 357/8"	51

Drum Bung Nut Wrench

Bung Nut Wrenches are multipurpose drum tools that not only open and close drum bungs or plugs, they also work as a bung wrench, ring wrench, and faucet wrench all in one! Wrenches are universal because they fit all types of industrial drum plugs and bungs in metal or plastic. Constructed of NSF 51 compliant stainless steel and meets 2009 FDA Food Code requirements for nonfood-contact equipment. These durable wrenches will not bend, break, or chip. Eliminate the need for extra tools with these multifunctional drum wrenches! Patent pending.



model BNW-SS-W

48 Hours to Ship

New

MODEL NUMBER	DESCRIPTION	OVERALL LENGTH	WEIGHT (POUND)
BNW-SS-W	STAINLESS STEEL	12"	2

Manual Drum Faucet

Quickly and easily dispense drum contents with our Stainless Steel Drum Faucet.



model DFT-SS

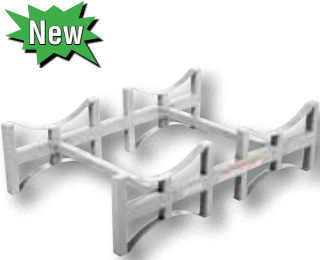
48 Hours to Ship

MODEL NUMBER	DESCRIPTION	ACCOMMODATES BUNG SIZE	WEIGHT (POUND)
DFT-SS	STAINLESS STEEL (SPRING-LOADED HANDLE)	¾"	2

Stackable Drum Racks

Stackable Drum Racks accommodate 55 gallon drums and feature four-way fork truck access. Not recommended for stacking more than four (4) racks high. All steel construction with ¼" formed steel cradles. Bolt together assembly with hardware included.

Models with suffix -G are galvanized. Models with suffix -SS are stainless steel.



model DRUM-RACK-2-SS

MODEL NUMBER	DRUM CAPACITY	OVERALL SIZE (W x D x H)	UNIFORM CAPACITY	MATERIAL	WEIGHT (POUND)
DRUM-RACK-2-G	2	45½" x 297/8" x 12¾"	1,600 lb.	GALVANIZED	90
DRUM-RACK-3-G	3	71½" x 297/8" x 12¾"	2,400 lb.	GALVANIZED	105
DRUM-RACK-2-SS	2	45½" x 297/8" x 12¾"	1,600 lb.	STAINLESS	91
DRUM-RACK-3-SS	3	71½" x 297/8" x 12¾"	2,400 lb.	STAINLESS	106

Drums Standard and U.N. Rated

High quality 304 stainless steel drums are finished in a 2B polish. Meets most U.N. requirements for shipping and packaging. Excellent corrosion resistance makes these stainless steel drums superior for storage and shipping of foods and chemicals. Open head drums have removable lids and 12 gauge bolt ring closure. 2" and ¾" bung standard.



model SSD-30-OH-04



model SSD-30-TH-03

MODEL NUMBER	VOLUME CAPACITY	GAUGE TOP/BODY/BOTTOM	STYLE	UN SOLID	UN LIQUID	WEIGHT (POUND)
SSD-30-OH-04	30 GALLON	18 / 18 / 18	OPEN HEAD	1A2 / X225 / S	1A2 / Y1.5 / 150	33
SSD-30-TH-03	30 GALLON	18 / 18 / 18	CLOSED HEAD	N/A	1A1 / X1.2 / 300	35
SSD-55-OH-01	55 GALLON	16 / 16 / 16	OPEN HEAD	1A2 / X430 / S	1A2 / Y1.5 / 200	60
SSD-55-TH-03	55 GALLON	16 / 16 / 16	CLOSED HEAD	N/A	1A1 / X1.8 / 300	48
SSD-55-TH-04	55 GALLON	16 / 16 / 16	CLOSED HEAD	N/A	1A1 / X1.8 / 550	60

Drum Lifter

A stainless steel, adjustable, 3-point drum lifter for lifting, transporting, and stowing 30 and 55 gallon steel or plastic drums. Designed with a 3-point drum contact with stabilizing arms, which reduces damage to the drum and automatically engages the drum rim when lowered. Ideal vertical drum lifting tool which can be used with an overhead crane, hoist, or forklift attachment. Strong and durable 304 grade full stainless steel construction. Designed for quick and easy one person operation.

MODEL NUMBER	ACCEPTABLE DRUM SIZE	UNIFORM CAPACITY	WEIGHT (POUND)
DL-1000-SS	30 & 55 GALLON	1,000 lb.	33



Vertical Drum Lifter

The stainless steel 2-point drum lifter is great for lifting 30 and 55 gallon steel or plastic drums. It makes transportation of open or closed drums easy. Allows quick, gentle loading into over packs and keeps drums upright during lifting to reduce spilling. Works perfectly with a hoist or an overhead crane. Full stainless steel construction.

MODEL NUMBER	ACCEPTABLE DRUM SIZE	UNIFORM CAPACITY	WEIGHT (POUND)
VDL-1000-SS	30 & 55 GALLON	1,000 lb.	28



Tilting Drum Rings

Easily transport steel drums with your fork truck and the Tilting Drum Rings. Pivoting fork pockets allow you to manually rotate drum to dispense light materials. To use, slip the band over the belly of the steel drum and tighten the lock to secure the band around the belly of the drum. Usable fork openings are 5¾"W x 3"H each. Welded stainless steel construction.

MODEL NUMBER	USABLE DRUM SIZE	MATERIAL & FINISH	UNIFORM* CAPACITY	WEIGHT (POUND)
TDR-30-SS	30 GALLON	304 STAINLESS STEEL	1,200 lb.	24
TDR-55-SS	55 GALLON	304 STAINLESS STEEL	1,200 lb.	25

*CAPACITY IS BASED ON FULL DRUMS
HALF-FULL DRUMS ARE RATED AT 600 LB. UNIFORM CAPACITY



48 Hours
to Ship

Mobile Drum Dolly

Transport ordinary or specialty 55 gallon steel drums easily with this multipurpose Stainless Steel Drum Dolly. Assembly required.

MODEL NUMBER	DRUM TYPE (GALLON)	CASTER TYPE	HEIGHT	UNIFORM CAPACITY	WEIGHT (POUND)
DRUM-SS-55-H	55	HARD RUBBER	6"	800 lb.	23



Multi-Purpose Dolly

Stainless Steel Multi-Purpose Dolly rolls smoothly on four (4) 3" x 1¼" swivel casters. Each unit comes with a 4 foot long nylon pull strap that helps in transporting down aisles or over thresholds. Rubber-coated hook allows strap to hook on top of drum for storage. The dollies can transport a 5 gallon pail, 30 or 55 gallon drum, or LP gas tank.

MODEL NUMBER	CASTER TYPE	UNIFORM CAPACITY	WEIGHT (POUND)
DRUM-QUAD-CS-SS	HARD RUBBER	900 lb.	24





New

model
DCR-110-55-SS

Manual Drum Carrier/Rotator

Here is an efficient, economical way to handle 55 gallon steel drums. Sturdy handle provides leverage for heavy lifting and easily locks drum in position 5" to 11" off floor. Drum rotates 360°. Rolls smoothly on two (2) 8" front wheels and one (1) 4" rear swivel caster. Not for use with drums on pallets.

MODEL NUMBER	ACCEPTABLE DRUM TYPES	ROTATION METHOD	UNIFORM CAPACITY	WEIGHT (POUND)
DCR-110-55-SS	55 GALLON STEEL	MANUAL	800 lb.	143

DRUM MUST BE FULL TO ROTATE AT RATED CAPACITY



New

model
DRUM-LT-SS

Drum Lifter/Transporter

The Stainless Steel Hydraulic Drum Lifter/Transporter is designed to allow the operator to load or unload drums on and off the corner of pallets. Straddle leg design allows the drum lifter to glide over standard pallets and grab most 30, 55, or 85 gallon steel and poly drums. Drums are raised and lowered easily using the foot pump. 304 grade all stainless steel construction. Ideal for wash-down, pharmaceutical, and clean room applications. Highly maneuverable on two (2) rigid and two (2) swivel with brake nylon wheels. Cannot be used with fiber drums.

MODEL NUMBER	ACCEPTABLE DRUM TYPES	OVERALL SIZE (W x D x H)	BEAK SERVICE RANGE	UNIFORM CAPACITY	WEIGHT (POUND)
DRUM-LT-SS	STEEL & POLY	48" x 35" x 63"	26" - 71"	800 lb.	310



New

model DBT-SS

model DBT-SS-DLX

Drum Trucks

DBT-SS: Tilt and lower drums to a horizontal position for dispensing. Grips all types of steel 30, 55, & 85 gallon drums and most rimmed plastic and fiber drums. Robust, non-corrosive design featuring 304 all stainless steel construction. Adjustable chime hook helps to secure the drum. Kickstand for holding the unit in stand-up position. 4-wheel design offers exceptional maneuverability through tight areas. 4½" ground clearance with four (4) 8" x 2" nylon wheels.

DBT-SS-DLX: Easily, efficiently, and safely lift, move, and maneuver a wide range of steel and plastic drums. Automatic grip can be adjusted manually up and down to suit different heights. Robust design feature 304 all stainless steel construction. 50% less input force is required to lift a 1,000 lb. drum compared to standard drum trucks. To operate, simply push the truck to drum and attach the automatic grip to the drum rim. Rolls simply and smoothly on two (2) 8" x 2" nylon wheels.

MODEL NUMBER	ACCEPTABLE DRUM TYPE	OVERALL SIZE (W x D x H)	UNIFORM CAPACITY	WEIGHT (POUND)
DBT-SS	STEEL, PLASTIC, FIBER	22¼" x 51³⁄₁₆" x 37½"	1,000 lb.	70
DBT-SS-DLX	STEEL & PLASTIC	31¹⁄₈" x 20" x 55¹⁄₈"	1,000 lb.	95



New

model
LLW-PAILD-100-SS
Pail not included.

Variable Height Pail Dispenser

Variable Height Pail Dispensers provides 24 angle settings for dispensing 5 gallon, 11" diameter, plastic or steel pails. Dispense at any height between 1" and 52" by turning the hand cable winch. Rolls on 4" poly-on-poly rear swivel casters with total lock and 2" steel front rigid casters. Stainless steel construction.

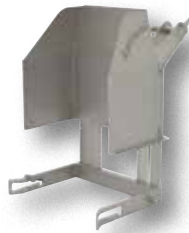
MODEL NUMBER	POUR HEIGHT LOWERED / RAISED	CRADLE HEIGHT LOWERED / RAISED	UNIFORM CAPACITY	WEIGHT (POUND)
LLW-PAILD-100-SS	1" TO 52"	6" TO 62¾"	125 lb.	139

Drum & Bin Dumpers

The Stainless Steel Drum & Bin Dumpers are great for the 'clean' workplace as well as manufacturing facilities. The structure is designed of 100% stainless steel, which promotes easy cleaning and long lasting strength. Push button functionality allows the user to move to a precise position and stop the movement completely, in an emergency, with the emergency switch. Batteries are waterproof, making maintenance a breeze. The unit rolls easily on poly wheels, while traversing from area to area. Once folded, the unit becomes more compact for utilizing less storage space. Retrofit drum and bin chutes are available.

MODEL NUMBER	DESCRIPTION	DUMP HEIGHT	ROTATION HEIGHT	LEVEL HEIGHT	UNIFORM CAPACITY	WEIGHT (POUND)
ULM-PBT-DTC-10	FRAME & DRUM DUMPER	51"	106"	51 1/8"	660 lb.	504
ULM-PBT-BTC-10	FRAME & BIN DUMPER	51"	106"	51 1/8"	660 lb.	452
RETROFIT OPTIONS						
ULM-PBT-RF-DTC-10	DRUM CHUTE ONLY*	--	--	--	660 lb.	256
ULM-PBT-RF-BTC-10	BIN CHUTE ONLY*	--	--	--	660 lb.	204

*RETROFIT CHUTE



model
ULM-PBT-RF-BTC-10



model
ULM-PBT-RF-DTC-10



model
ULM-PBT-DTC-10



model
ULM-PBT-BTC-10

Hydraulic Drum Dumpers

115 V 1-PHASE STANDARD

The Hydraulic Drum Dumpers works with 30 and 55 gallon plastic, steel, and fiber drums. The units include a stainless steel chute and base plate. Portable units have two (2) rigid and two (2) swivel casters with floor lock screws.

Standard features include: 56 frame, 3/4 HP motor, 115V single phase, 60hz. Upper travel limit switch, emergency safety velocity fuse in cylinder, and vertical adjustment drum restraints are standard. Dumper is operated with a hand held control on a standard 8 ft. long coil cord. Frame has a blue baked-in powder-coated toughness. The chutes are constructed with type 304 Stainless Steel in a mill finish. Structure on back of chute is painted with Steel-It™ coating. Adjustable height clamps are stainless steel.



model
HDD-48-7-S-SSC

PORTABLE HYDRAULIC DRUM DUMPERS w/ STAINLESS STEEL CHUTES					
MODEL NUMBER	DUMP HEIGHT	ROTATION HEIGHT	LEVEL HEIGHT	UNIFORM CAPACITY	WEIGHT (POUND)
HDD-36-7-P-SSC	36"	96"	63 3/4"	750 lb.	788
HDD-48-7-P-SSC	48"	116 3/4"	72 1/2"	750 lb.	864
HDD-60-7-P-SSC	60"	137 1/4"	84 1/2"	750 lb.	1019
HDD-72-7-P-SSC	72"	157 1/2"	96"	750 lb.	1034
HDD-36-10-P-SSC	36"	96"	63 3/4"	1,000 lb.	763
HDD-48-10-P-SSC	48"	116 3/4"	72 1/2"	1,000 lb.	862
HDD-60-10-P-SSC	60"	137 1/4"	84 1/2"	1,000 lb.	1042
HDD-72-10-P-SSC	72"	157 1/2"	96"	1,000 lb.	1100
HDD-36-15-P-SSC	36"	96"	63 3/4"	1,500 lb.	776
HDD-48-15-P-SSC	48"	116 3/4"	72 1/2"	1,500 lb.	880
HDD-60-15-P-SSC	60"	137 1/4"	84 1/2"	1,500 lb.	1026
HDD-72-15-P-SSC	72"	157 1/2"	96"	1,500 lb.	1115
STATIONARY HYDRAULIC DRUM DUMPERS w/ STAINLESS STEEL CHUTES					
HDD-36-7-S-SSC	36"	95 3/4"	60"	750 lb.	709
HDD-48-7-S-SSC	48"	116"	72"	750 lb.	800
HDD-60-7-S-SSC	60"	136 3/4"	84"	750 lb.	988
HDD-72-7-S-SSC	72"	157 1/4"	95 1/4"	750 lb.	1113
HDD-36-10-S-SSC	36"	95 3/4"	60"	1,000 lb.	727
HDD-48-10-S-SSC	48"	116"	72"	1,000 lb.	792
HDD-60-10-S-SSC	60"	136 3/4"	84"	1,000 lb.	942
HDD-72-10-S-SSC	72"	157 1/4"	95 1/4"	1,000 lb.	1055
HDD-36-15-S-SSC	36"	95 3/4"	60"	1,500 lb.	786
HDD-48-15-S-SSC	48"	116"	72"	1,500 lb.	814
HDD-60-15-S-SSC	60"	136 3/4"	84"	1,500 lb.	937
HDD-72-15-S-SSC	72"	157 1/4"	95 1/2"	1,500 lb.	1036

OPTIONAL 12VDC SYSTEM WITH 115V ON-BOARD CHARGER, MODEL VCC-12VDC
OPTIONAL 5 GALLON PAIL ADAPTOR FINGERS, MODEL HDD-5G-ADP

SPECIALTY POLISHES AND FINISHES

SSC OPTION INCLUDES
• 304 Stainless Steel Chute in mill finish

• Chute includes Steel-It™ coating standard on any mild steel welded to back of chute

• Steel frame, blue baked-in powder-coated toughness

• Adjustable height clamps are stainless steel

• All stainless steel chutes available, contact factory

• Can quote different grades of stainless polishing on chutes

• Optional FDA white powder coat is acceptable for incidental food contact



model
HDD-72-7-P-SSC





model BKT-SS-325

Buckets

Stainless Steel Buckets are for use in industrial and commercial applications where durability is required. Buckets are nestable and come standard with a carrying handle/bail for easy transport. Grade 202 stainless steel. 1mm thickness for 3.25 gallon, 2mm thickness for 5 gallon.

MODEL NUMBER	CAPACITY (GALLONS)	CAPACITY (QUARTS)	DEPTH	TOP DIAMETER	WEIGHT (POUND)
BKT-SS-325 [Ⓢ]	3.25	13	8¼"	12¾"	4
BKT-SS-500 [Ⓢ]	5	20	10½"	15⅛"	8

48 Hours
to Ship



model LDP-SS-316

Lever Action Drum Pump

Designed for dispensing and transferring liquids out of 55 gallon drums.

MODEL NUMBER	CONSTRUCTION	DISPLACEMENT PER STROKE	BUNG SIZE	WEIGHT (POUND)
LDP-SS-316 [Ⓢ]	316 STAINLESS STEEL	16 oz.	2"	5

Piston Pail Pump

Designed for dispensing and transferring liquids out of 5 gallon pails.

PAIL-PST-SS - Handles most liquids*

*NOT RECOMMENDED FOR: Ammonium Chloride, Aqua Regia, Bromine Water, Calcium Chloride, Chloracetic Acid, Chlorine Water, Ferric Chloride, Ferrous Chloride, Freon 12, Hydrobromic Acid, Hydrofluoric Acid, Sodium Hydroxide, Stannic Chloride, and Sulfuric Acid.



model PAIL-PST-SS

MODEL NUMBER	CONSTRUCTION	DISPLACEMENT PER STROKE	BUNG SIZE	WEIGHT (POUND)
PAIL-PST-SS [Ⓢ]	STAINLESS STEEL	8 oz.	1"	3

Platform Trucks

High quality stainless steel platform trucks highly suited for clean room environments, applications with food handling, and pharmaceutical industry. Completely formed from 201 grade stainless steel sheet and tube. Corrosion resistant, non-wearing, temperature resistant, completely hygienic stainless steel roller bearings. 100% stainless steel platform trucks.

New



model SSPT-3048

MODEL NUMBER	DECK SIZE (W x L)	DECK HEIGHT	UNIFORM CAPACITY	CASTER TYPE	WEIGHT (POUND)
SSPT-2436	24" x 36"	9½"	2,000 lb.	POLY-ON-POLY	55
SSPT-2448	24" x 48"	9½"	2,000 lb.	POLY-ON-POLY	64
SSPT-3048	30" x 48"	9½"	2,000 lb.	POLY-ON-POLY	70
SSPT-3060	30" x 60"	9½"	2,000 lb.	POLY-ON-POLY	81
SSPT-3672	36" x 72"	9½"	2,000 lb.	POLY-ON-POLY	100

48 Hours
to Ship



model SPHT-500-HD-SS

"P" Handle Hand Trucks

The "P" style hand trucks are ideal for transporting heavy and awkward loads. These trucks work well for the user that needs to free up one hand. The "P" shaped handle makes the truck easy to steer and maneuver. Assembly required.

MODEL NUMBER	NOSE PLATE (W x D)	UNIFORM CAPACITY	OVERALL SIZE (W x D x H)	WEIGHT (POUND)
10" x 2" HARD RUBBER WHEELS				
SPHT-500-HD-SS-HR [Ⓢ]	22" x 7½"	600 lb.	22" x 19" x 52"	45
SPHT-500-SS-HR [Ⓢ]	14" x 7½"	500 lb.	21" x 18" x 52"	45
10" x 3½" PNEUMATIC WHEELS				
SPHT-500-HD-SS [Ⓢ]	22" x 7½"	600 lb.	22" x 19" x 52"	35
SPHT-500-SS [Ⓢ]	14" x 7½"	500 lb.	21" x 18" x 52"	24

AXLE AND WHEEL HUB NOT STAINLESS STEEL

Solid Rivet Shelving

High quality stainless steel solid shelving is made of type 304 stainless steel construction with brushed finish. Each model includes five (5) adjustable shelves with a uniform capacity of 600 pounds per shelf. The 18 gauge thick shelves are adjustable in 1½" increments. Two-piece corner post design includes plastic connectors. Shipped knock-down, easy assembly.

MODEL NUMBER	SHELF SIZE (W x L)	OVERALL HEIGHT	UNIFORM CAPACITY PER SHELF	WEIGHT (POUND)
LWSS-1836	18" x 36"	72"	600 lb.	86
LWSS-1848	18" x 48"	72"	600 lb.	93
LWSS-2436	24" x 36"	72"	600 lb.	91
LWSS-2448	24" x 48"	72"	600 lb.	133



model LWSS-1848

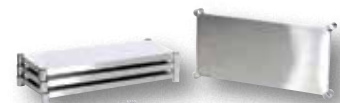
Shelving

Provide easy access to stored items from all sides. High-quality stainless steel (type 304 with a #4 brushed finish) construction is ideal for commercial or industrial use. Each model includes four (4) adjustable shelves ideal for different height products. Shelves are 18 gauge thick and hold up to 600 pounds each (uniform load). Units ship knock-down and require assembly. Shelving kits include four (4) shelves and hardware.

MODEL NUMBER	SHELF SIZE (W x L)	OVERALL HEIGHT	UNIFORM CAPACITY PER SHELF	WEIGHT (POUND)
SSS-1836	18" x 36"	74"	600 lb.	110
SSS-1848	18" x 48"	74"	600 lb.	135
SSS-2436	24" x 36"	74"	600 lb.	129
SSS-2448	24" x 48"	74"	600 lb.	185
STAINLESS STEEL SHELVING KITS				
SSS-1836-SK	18" x 36"	--	600 lb.	70
SSS-1848-SK	18" x 48"	--	600 lb.	95
SSS-2436-SK	24" x 36"	--	600 lb.	89
SSS-2448-SK	24" x 48"	--	600 lb.	101
STAINLESS STEEL LEG KIT				
SSS-LGK	INCLUDES FOUR LEGS/CORNER POSTS			12



model SSS-1848



model SSS-1836-SK

Bronze Tool Sets

The Bronze Tool Sets are great for working in manufacturing and construction facilities. The sets are constructed of aluminum bronze for non-sparking use in hazardous areas. A variety of sets are available to fit the need in a range of projects, from double sided open end wrench sets to screwdriver sets. The units are long lasting, durable, and non-marring.



model SR-BWS



model SR-TW



model SR-SPS



model SR-LSS



model SR-SSS



model SR-SDS



model SR-AWS



model SR-BW



model SR-CWS



model SR-PWS

MODEL NUMBER	DESCRIPTION	WEIGHT (POUND)
SR-SSS	28-PIECE ½" DRIVE SOCKET SET	16
SR-LSS	24-PIECE ¾" DRIVE SOCKET SET	18
SR-SPS	3-PIECE PLIER SET	6
SR-TW	3-PIECE TORCH WRENCH SET	6
SR-BWS	9-PIECE DOUBLE-SIDED, OPEN END WRENCH SET	7
SR-CEWS	9-PIECE DOUBLE-SIDED, CLOSED END WRENCH SET	8
SR-PWS	3-PIECE PIPE WRENCH SET (8", 12", 18")	18
SR-CWS	3-PIECE CRESCENT WRENCH SET (8", 10", 12")	15
SR-BW	BUNG WRENCH	3
SR-AWS	3-PIECE ALLEN WRENCH SET (¼", ⅜", ½")	3
SR-SDS	6-PIECE SCREWDRIVER SET (3 SLOTTED, 3 PHILLIPS, 4", 8", 12")	3



model SR-CEWS





model SR-BPH



model SR-SH



model BKT-BRZ-250



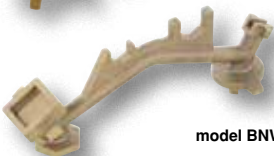
model SR-FUNNEL



model PDL-800-M-BR



model BNW-BX-W



model BNW-B-W



model BUNG-S-B1



model BUNG-S-B2

Bronze Hammers

Bronze Hammers are great for manufacturing and construction facilities. The forged aluminum-bronze hammers are non-sparking for use in hazardous areas. These durable hammer designs also allow for non-marring when used with other metals.

MODEL NUMBER	DESCRIPTION	WEIGHT (POUND)
SR-BPH	BALL PEEN HAMMER	2
SR-SH	SLEDGE HAMMER	6

Bronze Pail

Bronze Pail is ideal for a variety of settings. The aluminum bronze spark resistant alloy construction works well in hazardous conditions. The pail can be used with a range of materials and surroundings such as petroleum, various chemicals, and mining. A pivoting handle is attached for simple ergonomic transporting.

MODEL NUMBER	CAPACITY (GALLONS)	CAPACITY (QUARTS)	CAPACITY (POUNDS)	BASE DIAMETER	TOP DIAMETER	WEIGHT (POUND)
BKT-BRZ-250	2.5	10	25	10¾"	10½"	7

Bronze Funnel

The Bronze Funnel is ideal for maintenance and manufacturing environments. The funnel is constructed of aluminum bronze for a non-sparking finish when transporting chemicals that may be hazardous.

MODEL NUMBER	DESCRIPTION	WEIGHT (POUND)
SR-FUNNEL	FUNNEL	3

Multi-Purpose Overhead Drum Lifter/Wrench

Simple three-arm design for use with closed head 30 and 55 gallon steel, plastic, and fiber drums with a top lip. Each removable arm also functions as a wrench for use on drum plugs, faucets, and rim ring bolts. Mechanical operation. Requires assistance from an overhead lifting device. Features a bronze, non-sparking finish.

MODEL NUMBER	ACCEPTABLE DRUM STYLES	UNIFORM CAPACITY	WEIGHT (POUND)
PDL-800-M-BR	STEEL, PLASTIC, & FIBER	800 lb.	18

Non-Sparking Drum Bung Nut Wrenches

These multipurpose drum tools not only open and close drum bungs or plugs, they also work as a bung wrench, ring wrench, and faucet wrench all in one. Wrenches are universal in that they fit all types of industrial drum plugs and bungs in metal or plastic. These durable wrenches will not bend, break, or chip. Eliminate the need for extra tools with these multifunctional drum wrenches. Patent pending.

MODEL NUMBER	DESCRIPTION	OVERALL LENGTH	WEIGHT (POUND)
BNW-BX-W	NON-SPARKING BRONZE ALLOY	12"	2
BNW-B-W	NON-SPARKING BRONZE ALLOY	13"	5

Non-Sparking Drum Bung Sockets

Open drum bungs easily! Tighten or remove with a socket wrench (wrench not included). Use with impact drive tools. Manufactured from a non-sparking bronze alloy. Fits ¾" and 2" drum plugs.

MODEL NUMBER	DESCRIPTION	DRIVE SIZE	WEIGHT (POUND)
BUNG-S-B1	NON-SPARKING BRONZE ALLOY	¾"	1
BUNG-S-B2	NON-SPARKING BRONZE ALLOY	1½"	1

Brass Drum Vent Adaptor

Allows for use of 2" drum vents in 3/4" drum plugs. No need to remove drum faucets to use drum vents. Top features 2" female threads. Bottom features 3/4" male threads. Solid brass construction is non-sparking. Drum Vents are sold separately.

MODEL NUMBER	DESCRIPTION	WEIGHT (POUND)
DVA-B [Ⓢ]	BRASS DRUM VENT ADAPTOR	2



model DVA-B

48 Hours to Ship

Drum Vents

Two styles available for use with drums in horizontal or vertical positions. Use with standard 2" drum plug openings. Each vent includes a flash arrestor for safety. FM approved.

MODEL NUMBER	DESCRIPTION	DISPLACEMENT	WEIGHT (POUND)
VENT-V [Ⓢ]	VERTICAL DRUM VENT (BRASS)	FITS 2" OPENINGS	2
VENT-H [Ⓢ]	HORIZONTAL DRUM VENT (BRASS)	FITS 2" OPENINGS	2



model VENT-V



model VENT-H

Drum Lock

Prevent unauthorized access to drum contents. Simply screw drum lock into place, insert zinc plated steel rod, and secure with padlock (padlock not included). Steel rod is pre-drilled with a 5/16" diameter padlock hole. Works with both 3/4" and 2" bungs.

MODEL NUMBER	DESCRIPTION	THREAD DIAMETER	WEIGHT (POUND)
BLD-80 [Ⓢ]	BRASS DRUM LOCK	2" & 3/4"	4



48 Hours to Ship

model BLD-80

Manual Drum Faucets

Quickly and easily dispense drum contents with our Brass Drum Faucets.

MODEL NUMBER	DESCRIPTION	ACCOMMODATES BUNG SIZE	WEIGHT (POUND)
DFT-AL [Ⓢ]	BRASS-PLATED ALUMINUM (LOCKABLE HANDLE)	3/4"	1
DFT-AS-SC [Ⓢ]	BRASS-PLATED ZINC (LOCKABLE HANDLE)	3/4"	1
DFT-RIGID [Ⓢ]	BRASS (LOCKABLE HANDLE)	3/4"	1
DFT-ADJ* [Ⓢ]	BRASS (SPRING-LOADED HANDLE)	3/4"	2
JDFT-B [Ⓢ]	BRASS (MANUAL HANDLE)	2"	7

*ADJUSTABLE NOZZLE



model DFT-AL



model DFT-AS-SC



model DFT-RIGID



model DFT-ADJ

Non-Sparking Chain Hoists

Non-sparking brass construction. Brake engages automatically as soon as the hand chain stops moving. Forged load hooks. Low gear ration reduces effort required for lifting. Satisfies relevant ANSI B30.16-2003 requirements.

MODEL NUMBER	UNIFORM CAPACITY	LIFT (FEET)	HEAD ROOM	WEIGHT (POUND)
HCH-NS-1-10	1,000 lb.	10	14"	35
HCH-NS-2-10	2,000 lb.	10	14"	47



New

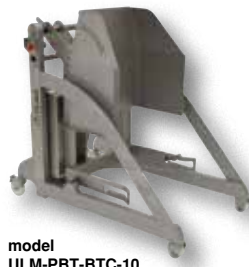
model HCH-NS-1-10

Acero inoxidable by Soluciones Mecanicas Srl

www.solumeca.com



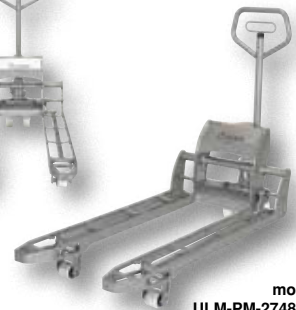
model
ULM-EPT-2745-44



model
ULM-PBT-BTC-10



model
ULM-PBT-RF-BTC-10



model
ULM-PM-2748-30



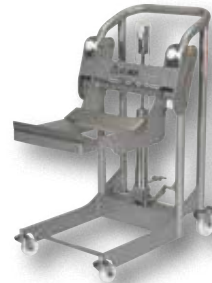
model
ULM-PBT-DTC-10



model
ULM-PBT-RF-DTC-10



model
ULM-WMS-550



model
ULM-HRH-850

